

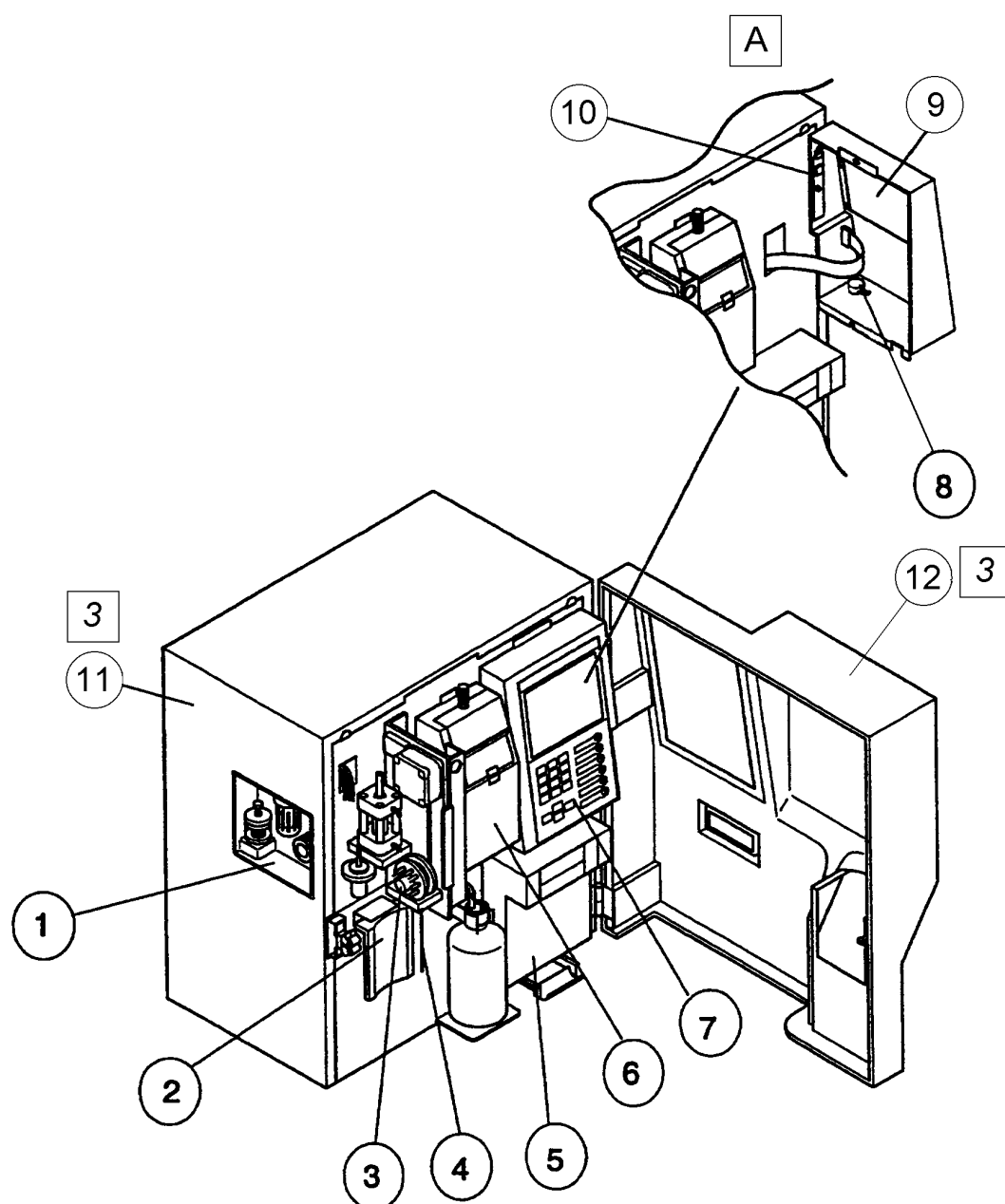
–Table of Contents–

Appendix A KX-21 Parts List

	Page
3 KX-21 Front View	A-1-02
3 KX-21 Right Side View	A-1-04
KX-21 Left Side View	A-1-06
Valve Unit A & B.....	A-1-08
Regulator Unit	A-1-10
Printer Unit	A-1-11
Detector Block.....	A-1-12
A Pneumatic Unit KX-21 (with/PSL-21Z).....	A-1-14
A KX-21 Pneumatic Replace Kit.....	A-1-15
A Pneumatic Unit KX-21 (with/PSL-21).....	A-1-16
PCB No. 4087 Assembly.....	A-1-17
3 Wiring Cord No. 2967/2969/2970/2971/2996	A-1-18
3 Drive Mechanism No. 58.....	A-1-20
 KX-21 Recommended Parts	 A-2-01
Alphabetical Order	A-3-01
Code No. Order.....	A-4-01

A Revised by ECR 399B017R-2

KX-21 Front View



 by TB99003

KX-21 Front View

	Code No.	Drawing No.	Description	Q'ty per Unit
	973-2891-3	1	REGULATOR UNIT KX-21	UNSATABLE
	923-5151-0	2	SWITCH NO.83 ASSY	1
	973-2761-6	3	SRV UNIT KX-21	UNSATABLE
	441-1634-7	4	PIPETTE NO.57	1
<div>1</div>	973-3001-8	5*	PRINTER UNIT KX-21	UNSATABLE
<div>1</div>	983-0271-4	5	KX-21 PRINTER UNIT	1
	973-2821-2	6	DETECTOR BLOCK KX-21	UNSATABLE
<div>A</div>	973-2991-9	7-10	OPERATION PANEL KX-21	1
	263-9534-9	7	PANEL KEYBOARD KX-21	1
	953-1211-8	8	VOLUME WITH WIRING NO.14	1
<div>A</div>	973-2991-9	9	OPERATION PANEL KX-21	1
	228-3755-1	9	LCD UNIT LSUBL 6131 A	1
<div>A</div>	228-3755-1	10	LCD UNIT LSUBL 6131 A	1
	228-9154-6	10	DC-AC INVERTER CXA-L0612-VJL	1
<div>A</div>	228-9154-6	11	DC-AC INVERTER CXA-L0612-VJL	1
<div>B</div>	322-3574-1	11#	COVER UPPER/SIDE KX-21	1
<div>3</div>	322-3583-4	11\$	COVER UPPER/SIDE KX-21N	1
<div>B</div>	322-3573-7	12#	FRONT COVER KX-21	1
<div>3</div>	322-3582-1	12\$	FRONT COVER KX-21N	1

* : ~~FOR CHINESE MARKET ONLY.~~

: KX-21

\$: KX-21N

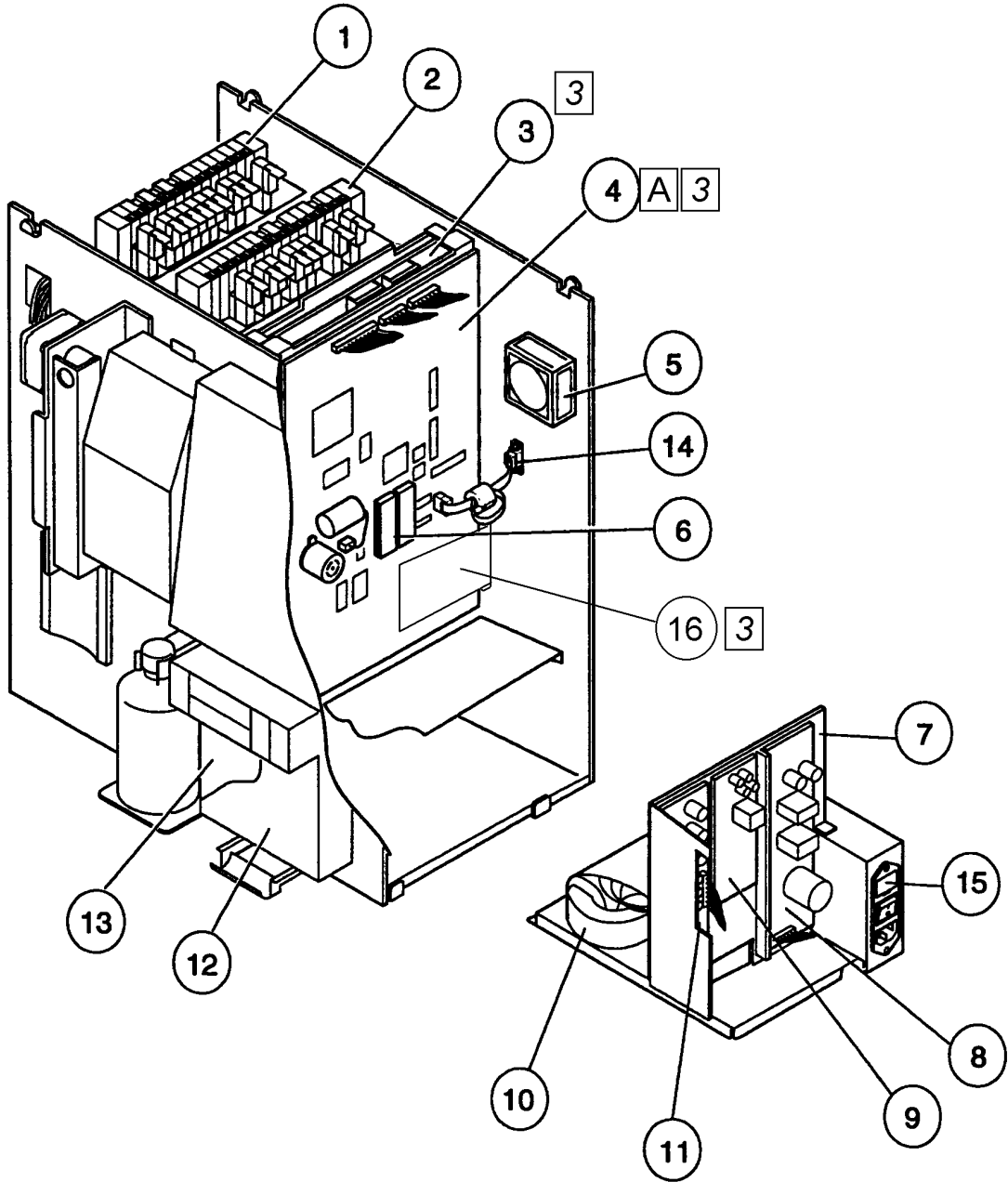
A

 by TB 99003

B

 by TB 99045

KX-21 Right Side View



KX-21 Right Side View

	Code No.	Drawing No.	Description	Q'ty per Unit
	973-2931-5	1	VALVE UNIT-B	UNSalABLE
	973-2901-3	2	VALVE UNIT-A	UNSalABLE
13	261-0701-0	3%	PCB NO.2135	1
13	261-0703-7	3	PCB NO.2135	1
3 13	261-0702-3	3&	PCB NO.2150	1
A	261-0800-1	4%	PCB NO.6363	1
3	261-0805-0	4&	PCB NO.6370	1
	933-4591-2	5	FAN ASSEMBLY NO.19	1
	973-3311-1	6%	ROM 1KX2F ASSY	1
12	011-0021-1	PM	ROM 1KX2F (01-XX) ASSY PM	1
	973-3011-5	7¥%	FOR JAPANESE MARKET	UNSalABLE
3	993-2781-1	7¥&	FOR JAPANESE MARKET	UNSalABLE
	973-3012-9	7\$%	POWER SUPPLY UNIT KX-21 (C2/117V)	1
3	993-2782-5	7\$&	POWER SUPPLY UNIT KX-21N (C2/117V)	1
	973-3013-2	7#%	POWER SUPPLY UNIT KX-21 (C3/220V)	1
3	993-2783-9	7#&	POWER SUPPLY UNIT KX-21N (C3/220V)	1
	973-3014-6	7*%	POWER SUPPLY UNIT KX-21 (C4/240V)	1
3	993-2784-2	7*&	POWER SUPPLY UNIT KX-21N (C4/240V)	1
	289-9642-9	8	SWITCHING REGULATOR VS50B-12	1
	289-9641-5	9	SWITCHING REGULATOR VS15B-5	1
	241-2108-9	10\$¥	TRANSFORMER POWER PT-094	1
	241-2109-2	10#*	TRANSFORMER POWER PT-095	1
13	261-0758-1	11	PCB NO.4087	1
13	261-0766-1	11	PCB NO.4087	1
	322-3577-1	12	PRINTER UNIT COVER KX-21	1
	662-0168-8	13	PCB NO.6350 WITH ROM	1
	973-4531-1	14	OUTPUT UNIT NO. 1 KX-21	1
	266-5109-1	15\$¥	FUSE 250V3.15A ST4-3.15A-N1	10
	266-5292-6	15#*	FUSE 250V2A NO.19195 (EUROPE)	10
3	993-2811-6	16&	PROGRAM CARD 1KXNH ASSY	1

¥: FOR 100 VAC.
 \$: FOR 117 VAC.
 #: FOR 220 VAC.
 *: FOR 240 VAC.
 %: FOR KX-21
 &: FOR KX-21N

A ECR 398G031

KX-21 Left Side View

KX-21 Left Side View

	Code No.	Drawing No.	Description	Q'ty per Unit
[A]	973-2981-1	1	PNEUMATIC UNIT KX-21	UNSATABLE
[A]	973-2982-5	1	PNEUMATIC UNIT KX-21 (W/PSL-21	1
	973-2941-2	2	DIAPHRAGM PUMP ASSY NO.51 (0.2)	1
[B]	973-2911-1	3	DIAPHRAGM PUMP ASSY NO.49 (2.0)	1
[5]	923-5541-4	3	DIAPHRAGM PUMP ASSY NO.34 (2.0)	1
	973-2911-1	3	DIAPHRAGM PUMP ASSY NO.49 (2.0)	1
[8]	873-0647-7	4	DIAPHRAGM PUMP ASSY NO.5 (1.0)	1
	973-2921-8	4	DIAPHRAGM PUMP ASSY NO.50 (1.0)	1
	973-2951-0	5	DIAPHRAGM PUMP ASSY NO.52 (0.05)	1
	443-3169-1	6	AIR CYLINDER T-2437	1
	973-2811-5	7	SRV FIXED VALVE NO.28-R ASSY	1
	973-2791-8	8	SAMPLE ROTOR VALVE NO.17 ASSY	1
	973-2801-8	9	SRV FIXED VALVE NO.28-L ASSY	1
	363-5382-6	10	FIXING MATERIAL NO.639	1
	363-5022-6	11	FIXING MATERIAL NO. 22	1
	443-2537-1	12	GLASS CHAMBER GC-37	1
	973-2891-3	13	REGULATOR UNIT KX-21	UNSATABLE
[3]	973-2971-4	14	WASTE CHAMBER NO.39 ASSY	1
[3]	963-3342-1	14	WASTE CHAMBER NO.35 ASSY	1
	913-0927-0	15	DILUENT CHAMBER NO.10 ASSY (C7)	1
	973-2781-1	16	SAMPLE ROTOR FIXTURE NO. 6	1
	973-2771-3	17	DRIVE MECHANISM NO.58 (C1/KX21)	1
	442-3460-8	18	FITTING NO. 9-A	1
	441-1634-7	19	PIPETTE NO.57	1
	443-1290-9	20	PINCH VALVE K-1 ASSY	1
[7]	341-1432-5	21#	SHAFT NO.249	1
[7]	341-1210-2	21*	SHAFT NO.277	1
[7]	001-0331-0	22	SAMPLE ROTOR FIXTURE NO. 7 (PM)	1
[7]	001-0341-7	23	SAMPLE ROTOR FIXTURE NO. 7	1
[7]	341-1389-1	24#	SHAFT NO.207	1
[7]	341-1209-8	24*	SHAFT NO.276	1
[7]	461-8438-7	25	SAMPLE ROTOR FIXTURE NO. 7 REPLACE PROC.	1

#: for KX-21 S/N 3904 and before [7]

*: for KX-21 S/N 3905 and thereafter [7]

[7] Important:

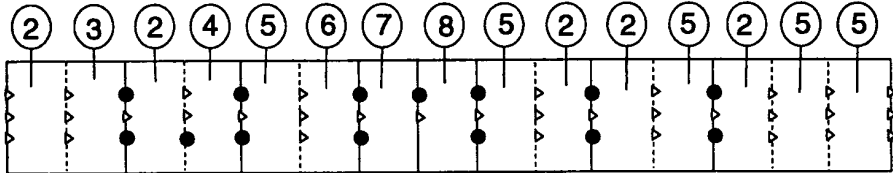
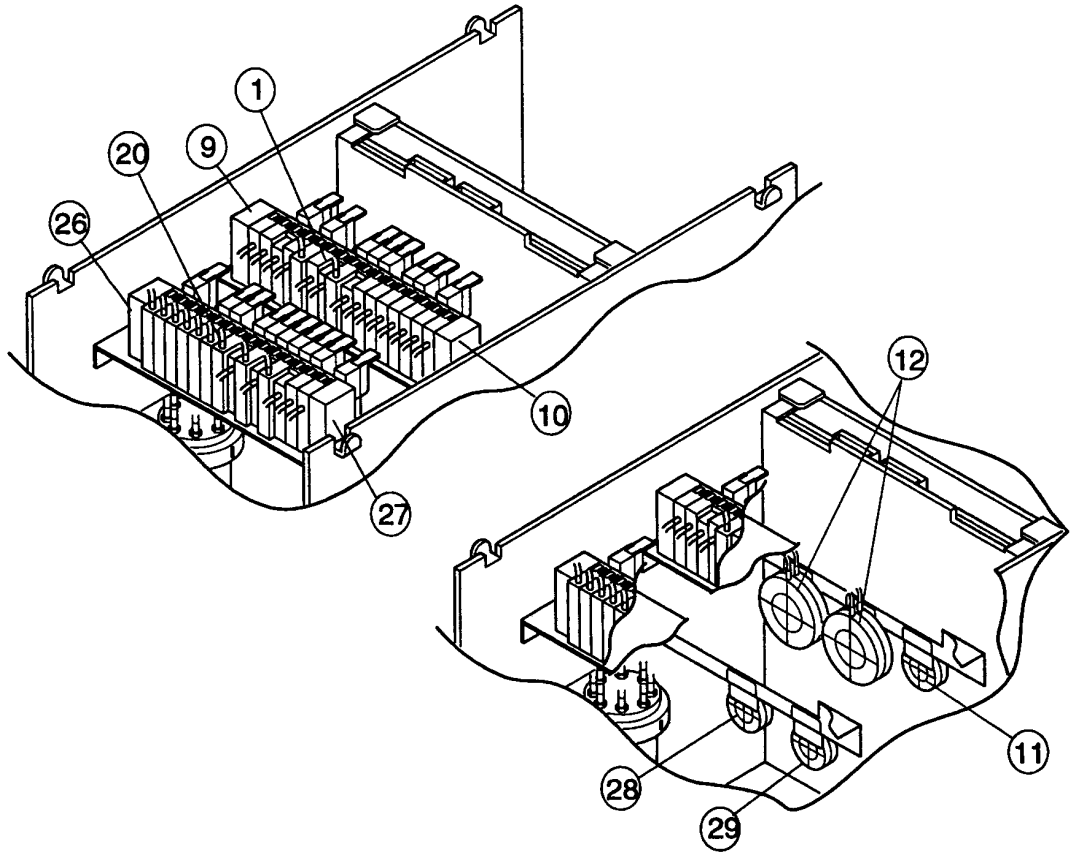
Drawing No. 22 thru 25 are the option for Sample Rotor Fixture No. 6. When replacing Sample Rotor Fixture No. 6 (lock-on type) with Sample Rotor Fixture No. 7 (screw type), Drawing No. 22 is needed at first. You can order Drawing No. 23, 24, 25 separately from the next time.

Be sure to confirm the KX-21 S/N indicated above (as # and *), when replacing Drawing No. 21 (for lock-on type) to Drawing No. 24 (for screw type).

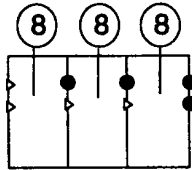
[A] ECR399B017R-2

[B] ECR 398J015

Valve Unit A & B

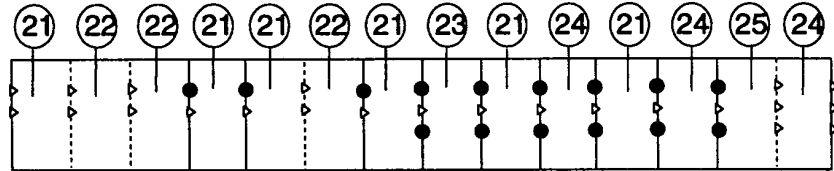


Valve Unit A-1



Valve Unit A-2

● O-Ring + Plug
▷ O-Ring



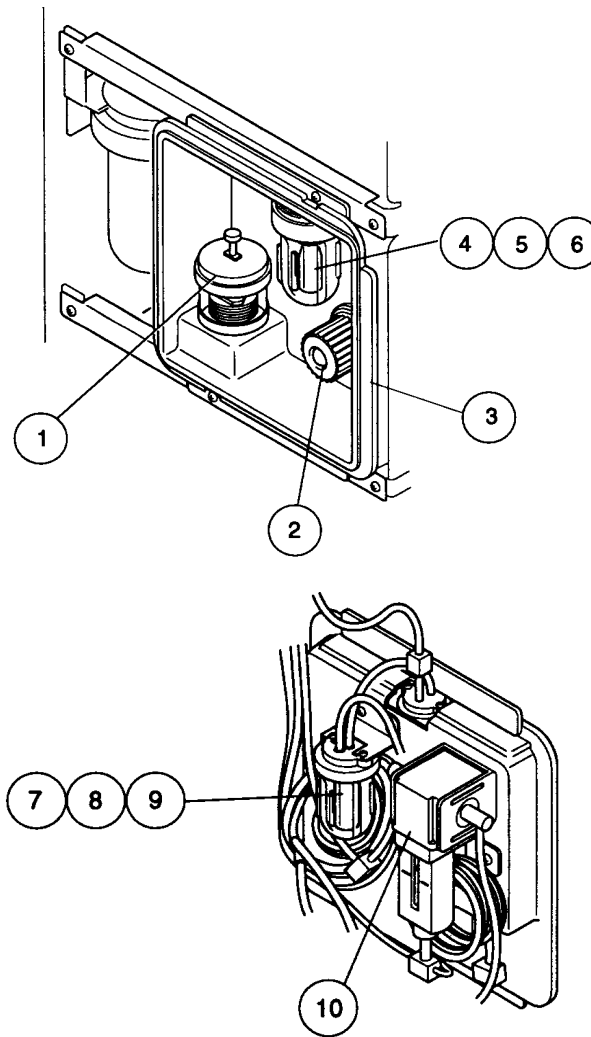
Valve Unit B

Valve Unit A & B

	Code No.	Drawing No.	Description	Q'ty per Unit
	973-2901-3	1	VALVE UNIT-A	UNSALABLE
	443-9657-6	2	AIR VALVE WTKV023-4E1-PLL-DC12	1
	443-9650-1	3	AIR VALVE WTKV014	1
	443-8655-5	4	AIR VALVE WTKV012	1
	443-8657-2	5	AIR VALVE WTKV013	1
	443-9658-0	6	AIR VALVE WTKV024-4E1-PLL-DC12	1
	443-8656-9	7	AIR VALVE WTKV012-E1-PLL-DC12	1
	443-8660-4	8	AIR VALVE WTKV011-E1-PLL-DC12	1
	443-8663-5	9	END PLATE WTKV010-L	1
	443-8662-1	10	END PLATE WTKV010-R	1
A	973-2921-8	11	DIAPHRAGM PUMP ASSY NO.50 (1.0)	1
A 8	873-0647-7	11	DIAPHRAGM PUMP ASSY NO.5 (1.0)	1
8	973-2921-8	11	DIAPHRAGM PUMP ASSY NO.50 (1.0)	1
A	973-2911-1	12	DIAPHRAGM PUMP ASSY NO.49 (2.0)	1
A 5	923-5541-4	12	DIAPHRAGM PUMP ASSY NO.34 (2.0)	1
5	973-2911-1	12	DIAPHRAGM PUMP ASSY NO.49 (2.0)	1
	973-2931-5	20	VALVE UNIT-B	UNSALABLE
	443-8656-9	21	AIR VALVE WTKV012-E1-PLL-DC12	1
	443-8655-5	22	AIR VALVE WTKV012	1
	443-9658-0	23	AIR VALVE WTKV024-4E1-PLL-DC12	1
	443-9657-6	24	AIR VALVE WTKV023-4E1-PLL-DC12	1
	443-9650-1	25	AIR VALVE WTKV014	1
	443-8663-5	26	ENDPLATE WTKV010-L	1
	443-8662-1	27	END PLATE WTKV010-R	1
	973-2941-2	28	DIAPHRAGM PUMP ASSY NO.51 (0.2)	1
B	973-2951-0	29	DIAPHRAGM PUMP ASSY NO.52 (0.05)	1

A ECR 398J015
B TB 99003

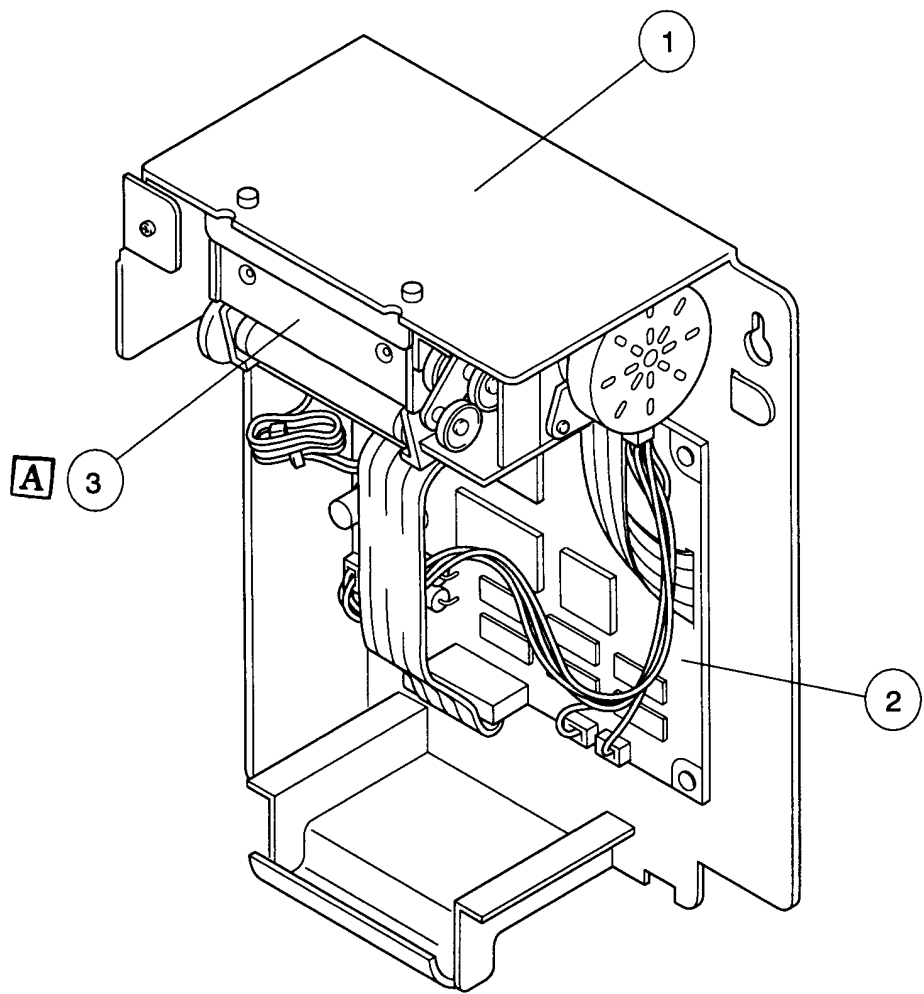
Regulator Unit



Code No.	Drawing No.	Description	Q'ty per Unit
367-8202-2	1	BELLOWS NO.2 WITH METAL	1
443-1971-6	2	RELIEF VALVE 247L-1V-1/8Z171	1
443-1972-0	2	RELIEF VALVE 247L4-1VZH	1
323-3713-1	3	REGULATOR UNIT CHASSIS	1
893-5012-3	4-6	TRAP CHAMBER NO. 9 ASY (C2/K45)	UNALABLE
365-1617-0	4	SUPPORT NO.104	1
443-1411-5	5	FLOAT NO. 1	1
443-0836-6	6	CHAMBER NO.17	1
933-3431-0	7-9	PU PROTECTION FILTER NO.1 ASSY	UNALABLE
365-1617-0	7	SUPPORT NO.104	1
443-1362-0	8	FILTER NO. 9	1
443-0836-6	9	CHAMBER NO.17	1
443-2455-2	10	AIR FILTER F1000-6-B	1

ECR 398E030

Printer Unit

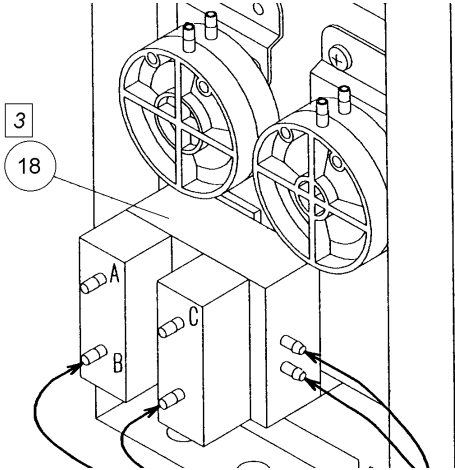
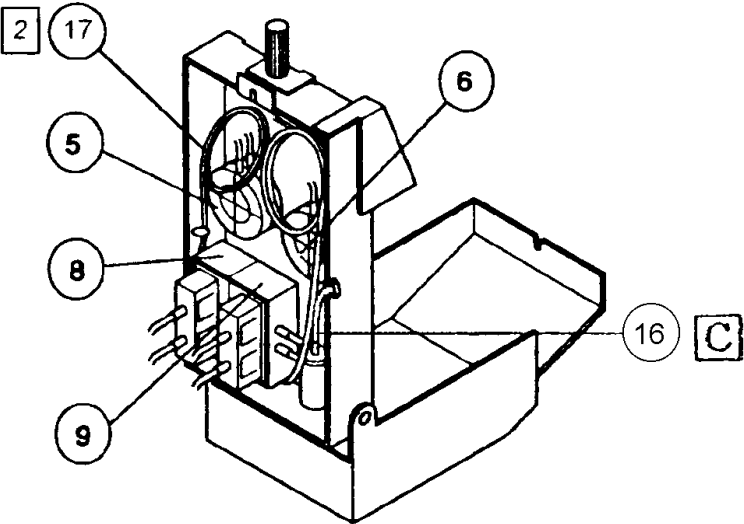
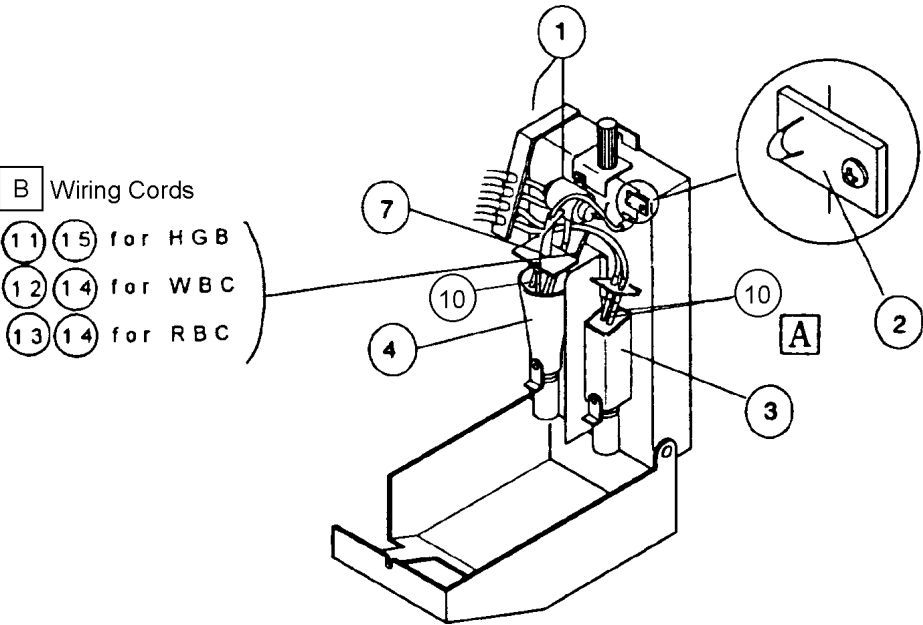


Code No.	Drawing No.	Description	Q'ty per Unit
323-3719-3	1	PRINTER UNIT CHASSIS	UNSalABLE
662-0168-8	2	PCB NO.6350 WITH ROM	1
<div>A</div> 281-7226-1	3	PRINTER FTP-421MCL001	1
<div>A</div> 281-7226-1B	3	PRINTER FTP-421MCL571	1
<div>13</div> 266-5046-3	3-1	FUSE 120V0.5A UL-TSC-0.5A	10

A

 ECR 398C005

Detector Block



Detector Block

	Code No.	Drawing No.	Description	Q'ty per Unit
	973-2841-7	1	HGB UNIT KX-21	1
	973-2881-6	2	THERMISTOR ASSY NO.37	1
	903-2291-2	3	TRANSDUCER NO. 3 ASSY (RBC)	1
	973-2831-0	4	TRANSDUCER NO.8 ASSY	1
	973-2871-9	5	DIAPHRAGM PUMP ASSY NO.48 (0.25)	1
	963-3661-9	6	DIAPHRAGM PUMP ASSY NO.45 (0.5)	1
	442-8503-9	7	TUBING NO.103	1
<div>3</div>	973-2851-4	8	MASTER VALVE 3MV14-AF ASSY	1
<div>3</div>	973-2861-1	9	MASTER VALVE 3MV17-C ASSY	1
<div>A</div>	442-3575-9	10	NIPPLE NO. 73	10
<div>B</div>	973-3141-2	11	WIRING CORD NO.2365	1
<div>B</div>	973-3131-5	12	WIRING CORD NO.2364	1
<div>B</div>	973-3121-8	13	WIRING CORD NO.2363	1
<div>B</div>	266-7179-9	14	FERRITE CLAMP TFC-23-11-14	1
<div>B</div>	266-7126-1	15	FERRITE CLAMP SFC-5	1
<div>C</div>	973-4581-7	16	KX-21 SHIELD TUBE ASSY	1
<div>2</div>	442-5055-4	17	TUBE POLYURETHANE 1.8MMX3.4MM	1
<div>3</div>	993-0261-2	18	MASTER VALVE 3MV31 ASSY	1

A

 TB 99003

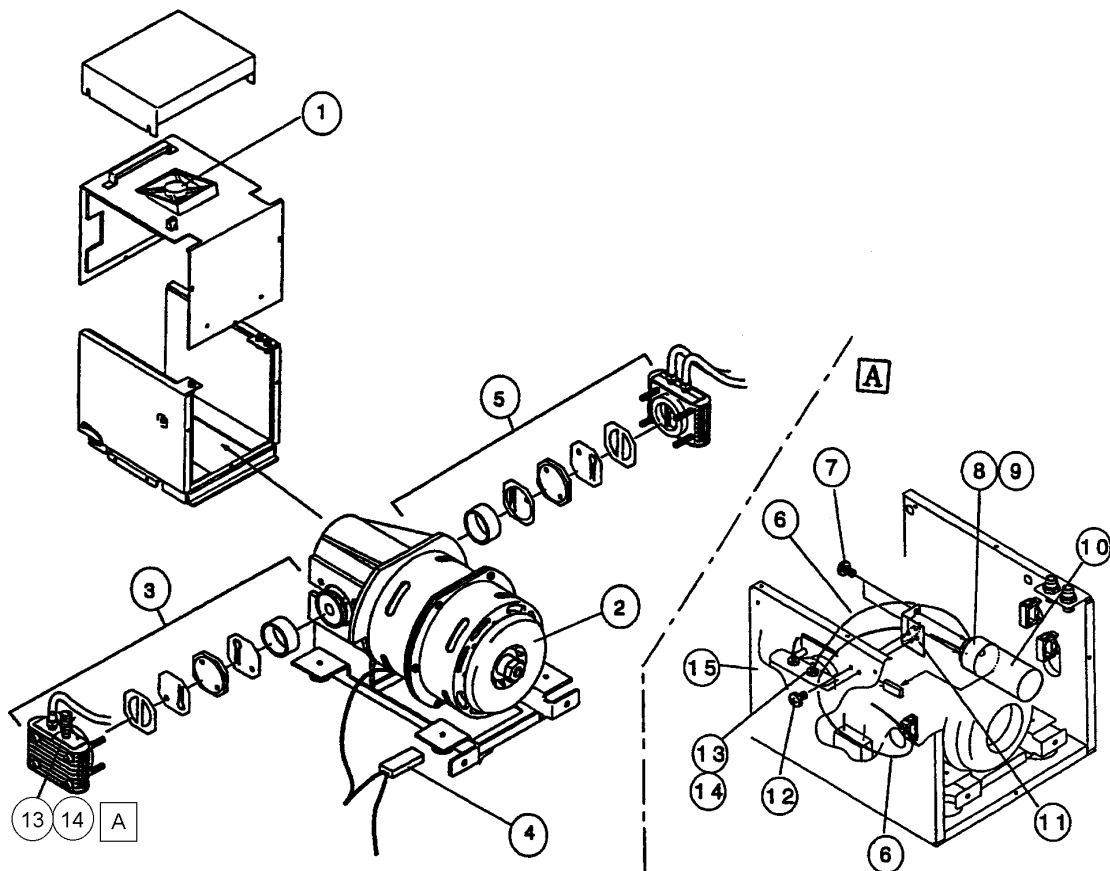
B

 TB 99045

C

 ECR 399K024

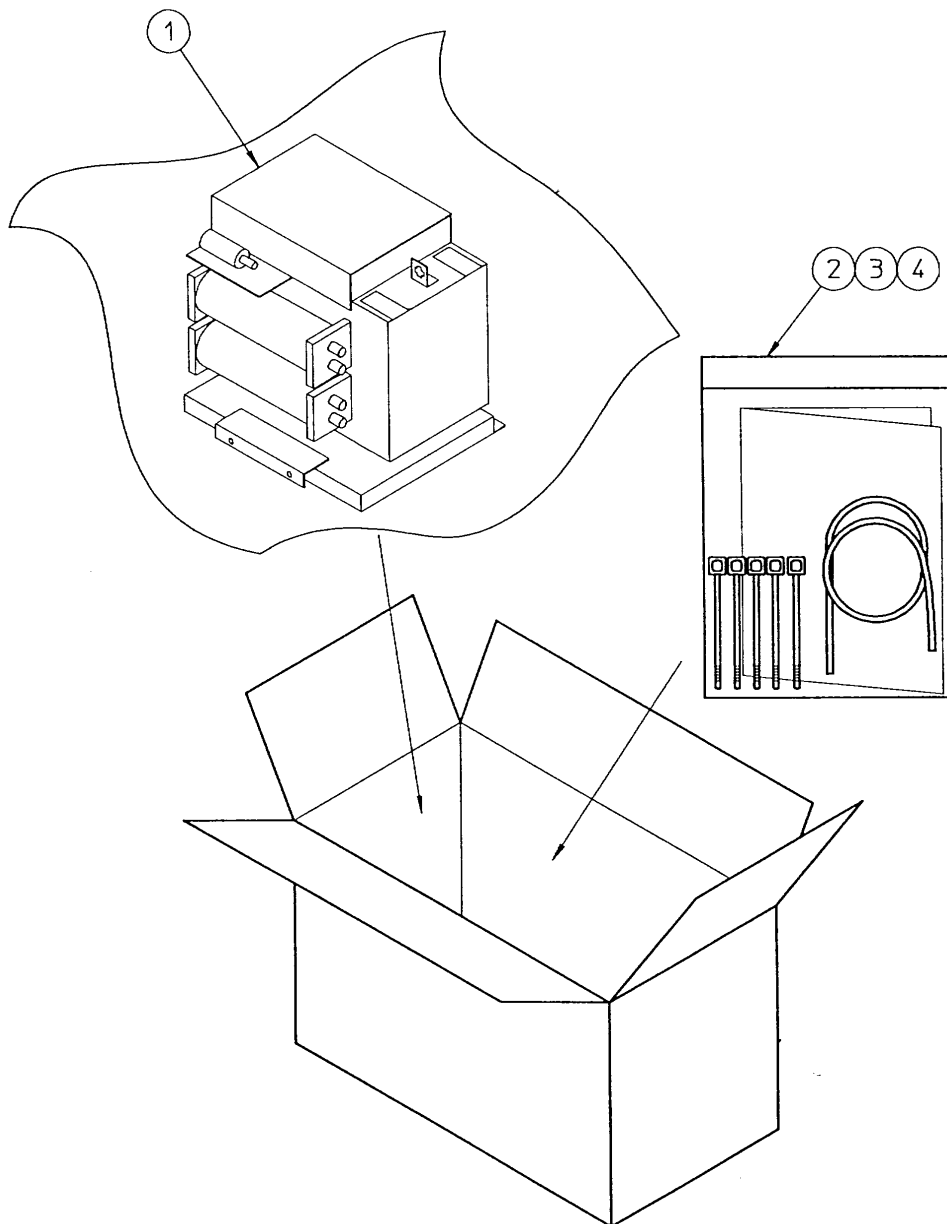
A Pneumatic Unit KX-21 (with PSL-21Z)



Code No.	Drawing No.	Description	Q'ty per Unit
281-0120-9	1	FAN FBA09A12HAZ	1
443-6954-1	2	PISTON PUMP PSL-21Z	1
443-6880-2	3	VACUUM PARTS SET FOR 21Z-PSV	1
266-8577-7	4	THERMAL PROTECTOR T70AR1U1N	1
443-6881-6	5	PRESSURE PARTS SET FOR 21Z-PSP	1
A 442-5338-7	6	TUBE POLYURETHANE 4MMIDX6MMOD	10 M
A 348-3812-1	7	SCREW BINDING M3X6 (SUS)	100
A 442-3029-0	8	ADAPTOR NO.29	1
A 346-3614-2	9	O-RING IN-20	10
A 443-0872-1	10	CHAMBER NO.48	1
A 366-0780-4	11	CHAMBER MOUNTING PLATE NO.60	1
A 348-3911-2	12	SCREW BINDING M3X4 (SUS)	100
A 442-4145-9	13	FITTING BN-6 X 4 X PT 1/8 BSN	5
A 365-6401-8	14	SLEEVE METAL MS-06	10
A 368-5760-2	15	ANTI-NOISE SPONGE NO.49-J	1
B 981-0771-7	PM	KX-21 PNEUMATIC REPLACE KIT	1

A ECR 398G045 **B** 399B017

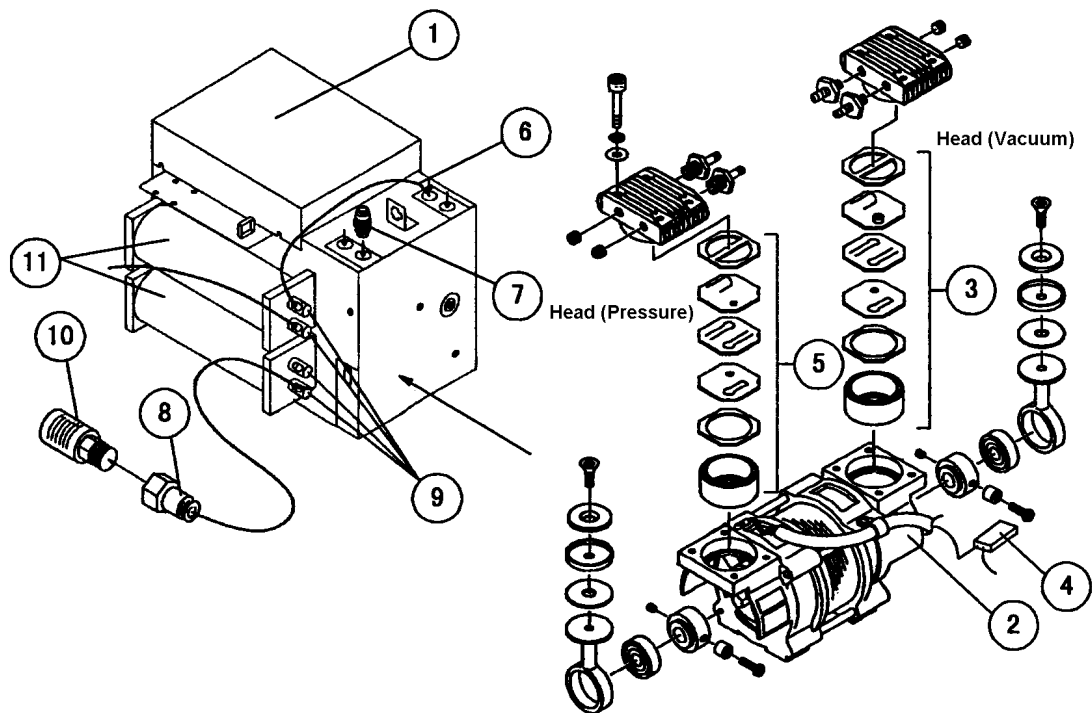
A KX-21 Pneumatic Replace Kit



Code No.	Drawing No.	Description	Q'ty per Unit
981-0771-7	1-	KX-21 PNEUMATIC REPLACE KIT	1
973-2982-5	1	PNEUMATIC UNIT KX-21 (W/PSL-21	1
461-9367-3	2	KX COMPRESSOR (PSL-21) REPLACE PROCEDURE	1
442-5418-8	3	TUBE TEFLON 0.8MMIDX1.8MMOD	5 M
266-4461-8	4	TIE WRAP CV-100	1000

A ECR399B017R-2

A Pneumatic Unit KX-21 (with PSL-21)

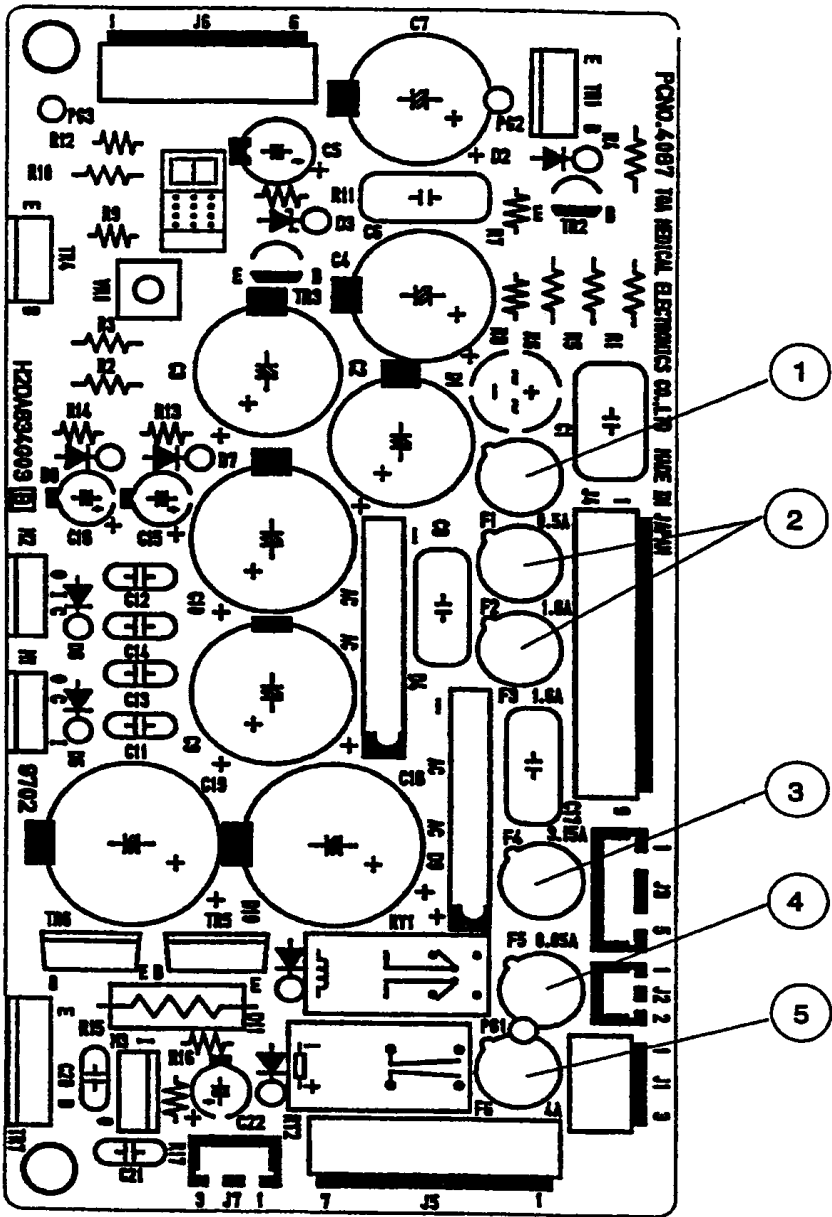


Code No.	Drawing No.	Description	Q'ty per Unit
281-0120-9	1	FAN FBA09A12HAZ	1
443-6953-7	2	PISTON PUMP PSL-21	1
443-6865-6	3	VACUUM PARTS SET FOR PSL-21	1
266-8577-7	4	THERMAL PROTECTOR T70AR1U1N	1
443-6866-0	5	PRESSURE PARTS SET FOR PSL-21	1
442-5338-7	6	TUBE POLYURETHANE 4MMIDX6MMOD	10 M
442-4603-0	7	FITTING UK 6M	1
442-4575-2	8	FITTING TSM6-02	5
442-4149-3	9	FITTING BL-6 X 4 X PT 1/8 BSN	5
449-1508-2	10	SILENCER SLW-8A (SL-1/4)	1
443-0705-5	11	TANK NO. 29	1

3

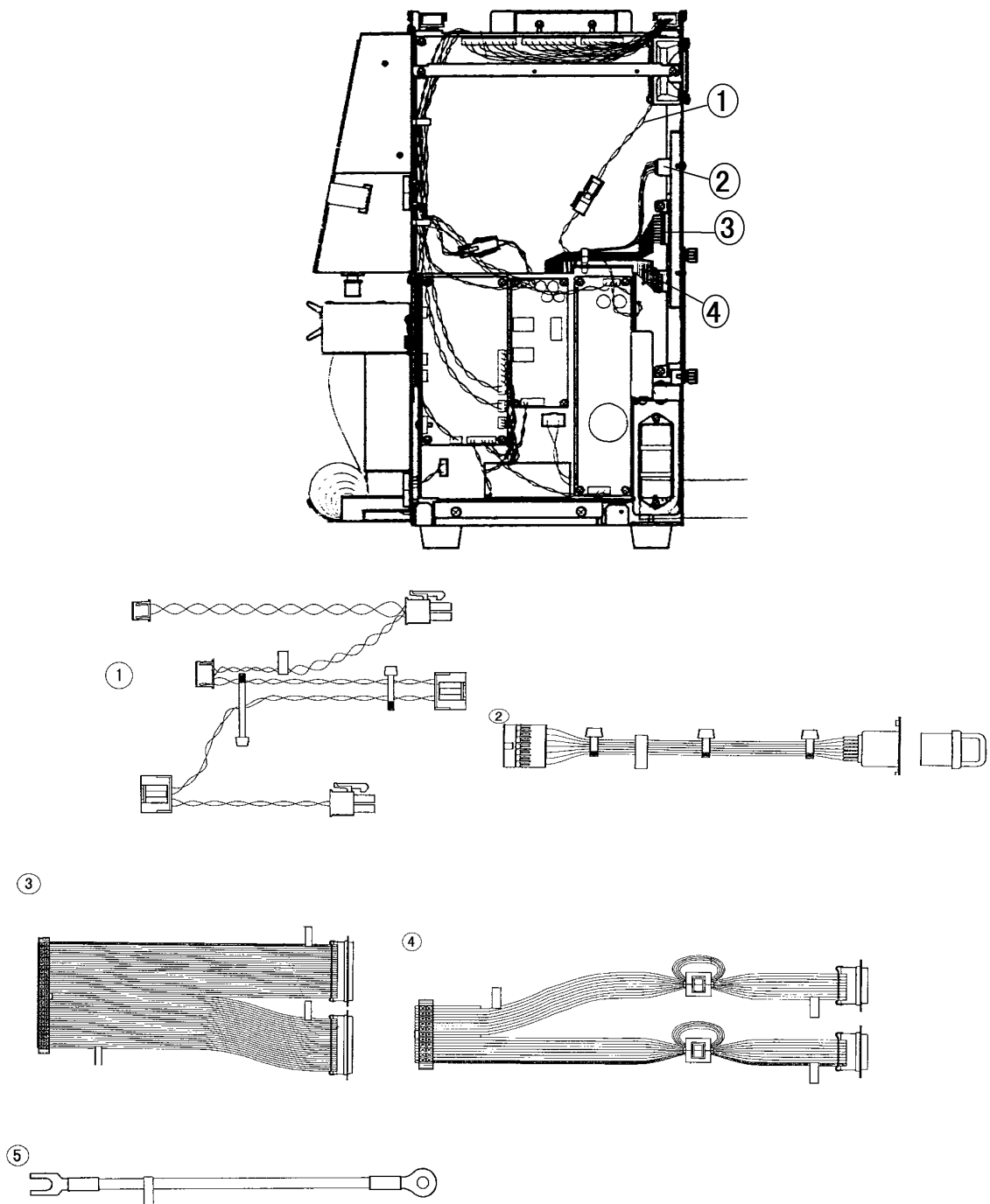
A ECR 399B017R-2

PCB No. 4087 Assembly



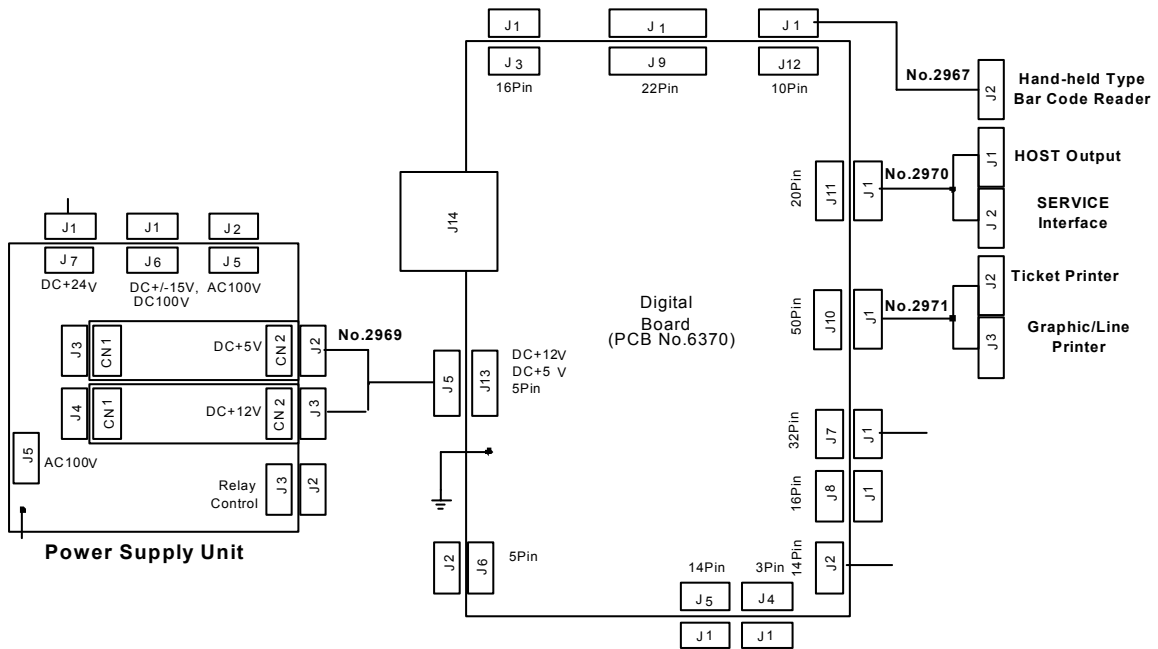
Code No.	Drawing No.	Description	Q'ty per Unit
266-5377-5	1	FUSE 0.5A K19374	10
266-5433-7	2	FUSE 1.6A K19374	10
266-5434-1	3	FUSE 3.15A K19374	10
266-5375-8	4	FUSE 0.05A K19374	10
266-5435-4	5	FUSE 4A K19374	10

3 Wiring Cord No. 2967 / 2969 / 2970 / 2971 / 2996



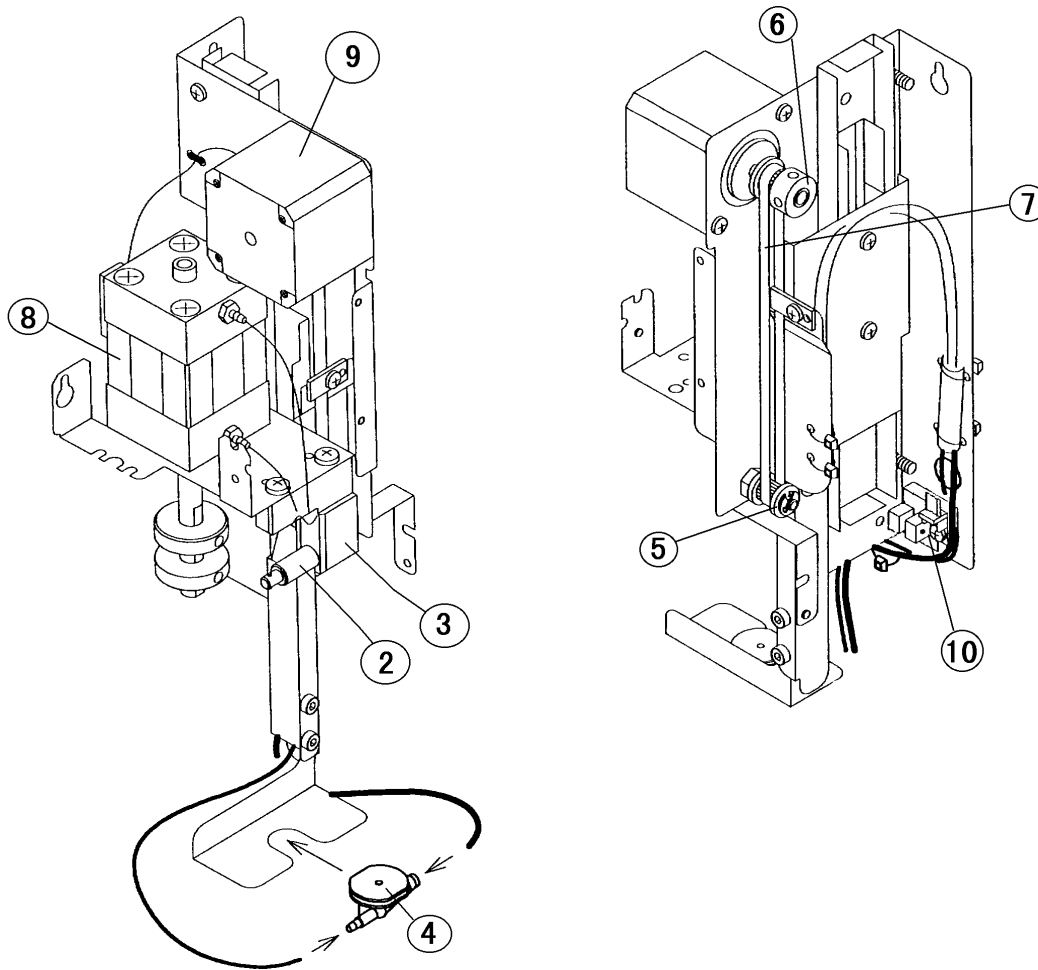
***NOTE:** Grounding wire between Front Cover and Main Unit

3 Wiring Cord No. 2967 / 2969 / 2970 / 2971 / 2996



Code No.	Drawing No.	Description	Q'ty per Unit
993-2821-3	1	WIRING CORD NO.2969	1
265-1250-5	2	WIRING CORD NO.2967	1
993-2841-8	3	WIRING CORD NO.2971	1
993-2831-1	4	WIRING CORD NO.2970	1
993-3701-7	5	WIRING CORD NO.2996	1

3 Drive Mechanism No. 58



Code No.	Drawing No.	Description	Q'ty per Unit
973-2771-3	1-	DRIVE MECHANISM NO.58 (C1/KX-21)	1
341-1432-5	2#	SHAFT NO.249	1
341-1210-2	2*	SHAFT NO.277	1
365-2804-6	3	SHAFT FIXTURE NO.60	1
441-8378-0	4	RINSING CUP NO.35	1
342-1516-8	5	PULLEY NO.184	1
342-1517-1	6	PULLEY NO.185	1
342-1733-2	7	TIMING BELT 144MXL-6.4	1
443-3169-1	8	AIR CYLINDER T-2437	1
281-1160-1	9	MOTOR STP-42D213	1
228-4164-5	10	PHOTO-INTERRUPTER TLP-1204(C3)	1

#: for KX-21 S/N 3904 and before

*: for KX-21 S/N 3905 and thereafter